

# Warmup konekt Wireless Thermostat with Humidity Sensor

KW-STATH



**konekt**  
WIRELESS  
BY **Warmup**

Installation and  
operating manual

# Package Contents

<b>Quantity</b>	<b>Description</b>
1	Warmup konekt Wireless Thermostat with Humidity Sensor
1	Clip-on frame
1	Mounting plate
2	Double-sided adhesive strips
2	Screws 3.0 x 30 mm
2	Wall Plugs 5 mm
2	1.5 V LR03/micro/AAA batteries
1	Quick Start Guide

# Table of Contents

1	Information about this manual.....	4
2	Hazard information .....	4
3	Function and device overview.....	5
4	General system information .....	6
5	Start-up .....	6
	5.1 Pairing device.....	6
	5.1.1 Pairing to the Smart Hub .....	6
	5.2 Mounting .....	7
	5.2.1 Adhesive strip mounting.....	7
	5.2.2 Mounting with screws .....	7
	5.2.3 Mounting on back boxes.....	7
6	Configuration menu .....	8
	6.1 Automatic mode.....	8
	6.2 Manual operation.....	8
	6.3 Holiday mode.....	8
	6.4 Operating lock.....	8
	6.5 Optimum start/stop function.....	8
	6.6 Offset temperature .....	8
	6.7 Boost Function.....	8
7	Replacing batteries.....	9
8	Troubleshooting.....	9
	8.1 Weak battery.....	9
	8.2 Command not confirmed .....	9
	8.3 Duty cycle .....	9
	8.4 Error codes and flashing sequences .....	10
9	Restore factory settings .....	11
10	Maintenance and cleaning .....	11
11	General information about radio operation .....	11
12	Technical specifications .....	12
13	Warranty .....	12

# 1 Information about this manual

This manual should be read carefully before commencing operation of your konekt wireless product. Always retain the product manuals for future use.

## Symbols used:



Hazard indication



Important information

## 2 Hazard information



Do not open the device except as instructed to by the installation and operation manual. It does not contain any user serviceable components.



The device is suitable for indoor use only. It must not be exposed to moisture, vibrations, mechanical loads or temperatures outside of its rated values.



For safety and licensing reasons (CE/UKCA), unauthorised change and/or modification of the device(s) is not permitted.



The device and its packaging are not toys; do not allow children to play with them. Small components such as batteries and packaging present a risk of choking or suffocation.



Using the device, in any way or for any purpose, other than those described in their installation and operation manuals invalidates any warranty or liability.



This device is intended for use in residential, business and commercial properties only.



This device does not require product specific maintenance. To clean, use a soft, clean and lint-free cloth. To remove more stubborn marks, dampen the cloth with warm water. Do not use detergents or chemicals on the devices.

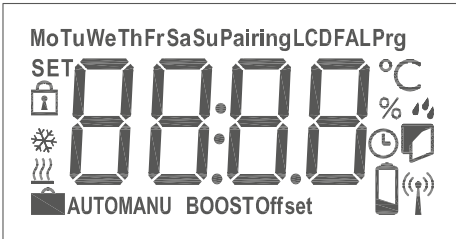
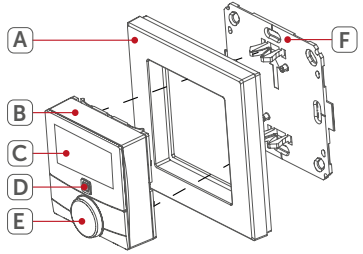
### 3 Function and device overview

The thermostat offers precise time and temperature control of floor heating or radiator systems when combined with the Wiring Centre or eTRV's. The thermostat measures both temperature and humidity in a room.

Due to the thermostat being battery operated it can be mounted anywhere in the room using the self-adhesive strips or screwed into the wall with the supplied clip on frame.

**Device overview:**

- (A) Clip-on frame
- (B) Thermostat
- (C) Display
- (D) System button (Pairing button and LED)
- (E) Rotary button
- (F) Mounting plate



**Display overview:**

- °C Set/actual temperature
- % Humidity
- Condensation Warning
- Open window symbol
- Low Battery
- Radio transmission
- BOOST** Boost function
- MANU** Manual operation
- AUTO** Schedule mode
- Holiday mode
- Heating
- Cooling
- Operating lock
- SET** Setpoint temperature

## 4 General system information


The thermostat is part of the Warmup konekt Wireless System. Devices in the konekt Wireless System system can be easily paired and setup through the konekt Wireless Smart Hub using the konekt App. All functions of the konekt Wireless System are described in detail in the User Guide. The User Guide and Online manuals for all other konekt Wireless devices are available on [www.warmup.co.uk](http://www.warmup.co.uk)


## 5 Start-up

### 5.1 Pairing device

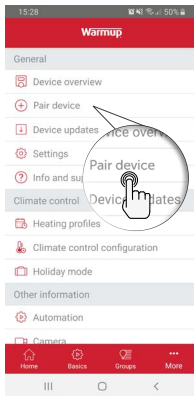
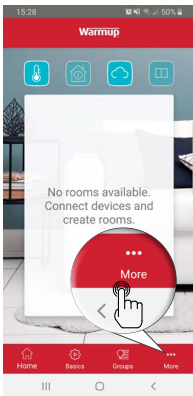
The thermostat can be paired seamlessly to the konekt Wireless Smart Hub (KW-UKHUB). To pair devices to the Smart Hub please download the konekt app.

#### 5.1.1 Pairing to the Smart Hub

 The Smart Hub must be set up via the konekt App, before any other devices can be added to your system. For further information, refer to the Smart Hub operating manual.

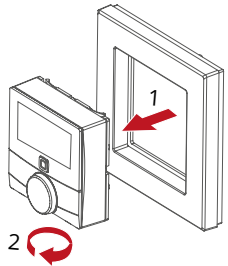
 If you have already connected the thermostat to another konekt Wireless device, you **MUST** restore its factory settings first before you can connect it to the Smart Hub (see section 10)


#### Step 1 - Select Pairing from the konekt App



#### Step 2 - Remove insulation strip & insert batteries

- Remove the thermostat (**B**) from the frame.
- Turn the thermostat around and remove the insulation strip from the battery compartment. Pairing mode will be activated.
- Pairing mode will remain active for 3 minutes.



 Your device will automatically appear in the konekt App. To confirm, scan the QR code attached to the device or alternatively enter the last four digits of the device number (SGTIN) in the App. Give the device a name and allocate it to a room.

**NOTE:** If pairing was successful, the LED **(D)** will turn green. The device is now ready for use. If the LED turns red you will have to try pairing the device again.



You can manually start pairing mode for another 3 minutes by pressing the system button **(D)** once.



Once the thermostat has successfully paired to the Smart Hub, programming of the device or changes to device settings must be done through the konekt app.



If required, you can quickly switch between manual or program mode on the thermostat by pressing and holding the Rotary button **(E)** for 2 seconds.

## 5.2 Mounting



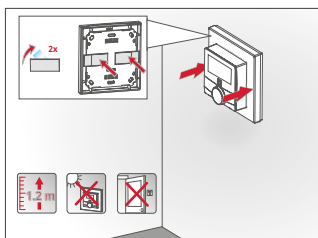
Choose a location for the thermostat. It should not be beside a window/door, in direct sunlight or above another heat generating device (e.g. radiator or TV).



The surface the thermostat is being applied to should be clean and dust free to ensure long term adherence.

### 5.2.1 Adhesive strip mounting

- Fix the adhesive strips **(G)** to the back of the mounting plate **(F)**. Ensure that the clips on the mounting plate can clip into the openings on the wall thermostat.
- Remove the protective film from the adhesive strips and press the thermostat into the wall plate.



### 5.2.2 Mounting with screws

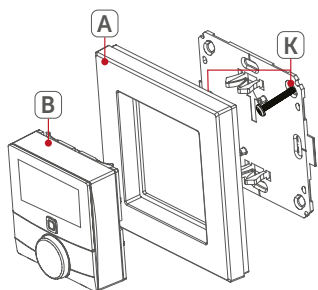


Make sure that there are no electrical cables or pipes at the chosen thermostat location.



For masonry walls, drill two 5 mm holes and insert the wall plugs provided. For stud walls, drill 1.5 mm pilot holes.

- Use screws and plugs **(K)** to fasten the mounting plate to the wall
- Attach the clip-on frame **(A)** to the mounting plate.
- Push the thermostat **(B)** into the clip on frame. Ensure the arrow on the plate is pointing upwards.



### 5.2.3 Mounting on back boxes



The thermostat can be mounted onto new or existing back boxes using the screws provided. If installing onto an existing back box there may still be existing cables which must be made safe first. This must be done by a qualified electrician.

If the back box is metallic it will reduce RF signal strength passing through it. Such a back box must not be connected to earth.

## 6 Configuration menu



Programming the thermostat or changing its settings must be done through the konekt app.

Configuration menu		
6.1	<b>AUTO</b>	Automatic mode
6.2	<b>MANU</b>	Manual operation
6.3		Holiday mode
6.4		Operating lock
6.5	<b>Prg</b>	Programming a heating schedule
6.6		Date and time
6.7	<b>Offset</b>	Offset temperature
6.8	<b>LCD</b>	Selecting the desired temperature display
6.9	<b>FAL</b>	Configuring the floor heating actuator
6.10		Communication test

### 6.1 Automatic operation

In automatic mode, the temperature is controlled in accordance with your set heating schedule. Any manual overrides will be activate until the next change in the heating schedule.

### 6.2 Manual operation

In manual mode, you can adjust the target temperature you would like thermostat to achieve. The target temperature can be set manually using the Rotary button **(E)** on the thermostat or through the app. This temperature remains active until the next manual change.

To switch between automatic and manual operation press and hold the rotary button **(E)** for 2 seconds.

### 6.3 Holiday Mode

Holiday mode allows you to maintain a constant temperature for a certain period, e.g. during your holidays.

### 6.4 Operating lock

Operation of the device can be locked to prevent settings being changed.

### 6.5 Optimum start/stop function

Turns the heating on at just the right time to achieve your target temperature when you scheduled. If required this can be switched off through the app.

### 6.6 Offset Temperature

As the temperature is measured on the thermostat, the temperature distribution can vary throughout a room. To adjust this, a temperature offset of  $\pm 3.5^{\circ}\text{C}$  can be set. If a nominal temperature of e.g.  $20^{\circ}\text{C}$  is set but the room only reaches  $18^{\circ}\text{C}$ , an offset of  $-2.0^{\circ}\text{C}$  may need to be set.

### 6.7 Boost Function

This will fully open the radiator valves of any eTRVs assigned to the same room to quickly heat the room. The boost will last for 5 minutes and can be activated by pressing the menu/boost button **(E)** or through the app.

Through the app you can amend the boost duration from 5 - 30 mins.



The Boost function works with eTRV's only. This function will not work when paired with an underfloor heating system.



## 7 Replacing batteries

If the symbol for low batteries (🔋) appear in the display or in the app, replace with two new LR03/micro/AAA batteries.

Once the batteries have been inserted, the thermostat will perform a self-test/restart. The LED will indicate that initialisation is complete by lighting up orange and then green.



Caution! There is a risk of explosion if the battery is not replaced correctly. Replace only with the same or equivalent type. Never recharge non-rechargeable batteries. Do not throw the batteries into a fire. Do not expose batteries to excessive heat. Do not short-circuit batteries. Doing so will present a risk of explosion.



Used batteries should not be disposed of with regular domestic waste! Take them to your local battery disposal point.

## 8 Troubleshooting

### 8.1 Low batteries

Provided there is enough voltage, the thermostat will still operate. Depending on the load, it may still be possible to send commands.

If the voltage drops too far during a command, the low battery symbol (🔋) and error code will be displayed on the device (see section 8.4). In this instance, the batteries must be replaced.

### 8.2 Command not confirmed

If at least one device does not accept a command, the LED (B) will light up red. This may be caused by radio interference (see section 11). Other possible issues may be:

- Device cannot be reached.
- Device is unable to execute the command (load failure, mechanical block, etc.).
- Device is defective.

### 8.3 Duty cycle

The duty cycle is a legally regulated limit of the transmission time of devices in the 868 MHz range. The aim of this regulation is to safeguard the operation of all devices working in the 868 MHz range. In the 868 MHz frequency range we use, the maximum transmission time of any device is 1% of an hour (i.e. 36 seconds in an hour). Devices must cease transmission when they reach the 1% limit until this time restriction comes to an end.

Warmup devices are designed and produced with 100% conformity to this regulation. During normal operation, the duty cycle is not usually reached.

However, intensively repeated device pairing processes may mean that this limit is reached in isolated instances during commissioning.

**IMPORTANT:** If the duty cycle limit is exceeded, the device may stop working for a brief period. The device will start working normally again after a short period (max. 1 hour).

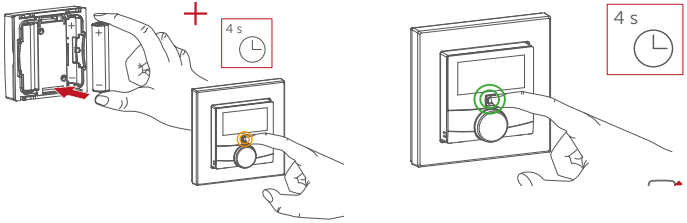
## 8.4 Error codes and flashing sequences

Flashing code	Meaning	Solution
Battery symbol (🔋)	Battery low	Replace the thermostat batteries
Antenna symbol (📶) flashing	Communication problem with SmartHub or connected device	Check the connection with the SmartHub or the connected devices.
Flashing humidity symbol (💧)	Humidity limit (60 %) in the room is exceeded	Ventilate the room, if required.
Lock symbol (🔒)	Operating lock activated	Deactivate the operating lock in the app.
Short orange flashing	Radio transmission/ attempting to transmit/ configuration data is transmitted	Wait until the transmission is completed.
1x long green light	Transmission confirmed	You can continue operation.
1x long red light	Operation failed	Please try again
Short orange flashing (every 10 s)	Pairing mode active	Enter the last four numbers of the device serial number to confirm
Short orange light (after green or red confirmation)	Batteries empty	Replace the batteries
1x long red light	Transmission failed or duty cycle limit is reached	Please try again
6x long red flashing	Device defective	Have a look at your app for error message or contact Warmup.
1x orange and 1 x green lighting (after inserting batteries)	Test display	Once the test display has stopped, you can continue.

## 9 Restore factory settings



The factory settings of the device can be restored. The device will automatically reconnect to the system and redownload its settings unless it is deleted within the konekt App first.



- Open the battery compartment.
- Remove a battery.
- Re-insert the battery while pressing and holding the system button **(D)** until the device LED **(D)** starts to flash orange
- Release the system button and then press and hold the system button **(D)** again until the orange flashing changes to green.
- Release the system button **(D)** to finish.

## 10 Maintenance and Cleaning



The device does not require any specific maintenance other than replacing the battery when necessary. To clean, use a soft, clean and lint-free cloth. To remove more stubborn marks, dampen the cloth with warm water. Do not use detergents or chemicals on the devices.

## 11 General information about radio operation

Radio transmission is performed on a non-exclusive RF channel, which means that there is a possibility of interference occurring. Interference can also be caused by switching operations, electrical motors or defective electrical devices.



The range of transmission within buildings can differ greatly from that available in the open air. Besides the transmitting power and the reception characteristics of the receiver, environmental factors such as humidity in the vicinity have an important role to play, as do on-site structural/screening conditions.

### Declaration of Conformity



Warmup hereby declares that the Warmup konekt Wireless radio equipment is compliant with RED Directive 2014/53/EU and Radio Equipment Regulations 2017. Please scan the QR Code for the Declaration of Conformity.

### Instructions for Disposal



Do not dispose of the device(s) with regular domestic waste! Electronic equipment must be disposed of at local collection points for waste electronic equipment in compliance with the Waste Electrical and Electronic Equipment Directive.

## 12 Technical specifications

### Warmup konekt Wireless Thermostat



Product Code	KW-STATH
Supply voltage	2x 1.5 V LR03/micro/AAA
Current consumption	50 mA max.
Battery life	2 years (typ.)
IP Rating	IP20
Ambient temperature	0 to 35 °C
Dimensions (W x H x D)	55 x 55 x 23.5 mm / 86 x 86 x 25 mm (incl. frame)
Weight	100 g (incl. batteries)
Radio frequency band	868.3 MHz / 869.525 MHz
Maximum radiated power	10 dBm max.
Receiver category	SRD category 2
Typ. open area RF range	250 m
Duty cycle	< 1 % per h / < 10 % per h
Software class	Class A
Method of operation	Type 1
Degree of pollution	2

## 13 Warranty

Warmup plc warrants these product(s), to be free from defects in the workmanship or materials, under normal use and service, for a period of three (3) years from the date of purchase by the consumer. If at any time during the warranty period the product is determined to be defective, Warmup shall repair or replace it, at Warmup's option.

If the product is defective, please either;

Return it, with a bill of sale or other dated proof of purchase, to the place from which you purchased it, or

Contact Warmup. Warmup will determine whether the product should be returned or replaced.

This warranty does not cover removal or re-installation costs and shall not apply if it is shown by Warmup that the defect or malfunction was caused by failure to follow the instruction manuals, incorrect installation or damage which occurred while the product was in the possession of a consumer. Warmup's sole responsibility shall be to repair or replace the product within the terms stated above.

WARMUP SHALL NOT BE LIABLE FOR ANY LOSS OR DAMAGE OF ANY KIND, INCLUDING ANY INCIDENTAL OR CONSEQUENTIAL DAMAGES RESULTING, DIRECTLY OR INDIRECTLY, FROM ANY BREACH OF ANY WARRANTY, EXPRESS OR IMPLIED, OR ANY OTHER FAILURE OF THIS PRODUCT. THIS WARRANTY IS THE ONLY EXPRESS WARRANTY WARMUP MAKES ON THIS PRODUCT. THE DURATION OF ANY IMPLIED WARRANTIES, INCLUDING THE WARRANTIES OF MERCHANTABILITY AND FITNESS FOR A PARTICULAR PURPOSE, IS HEREBY LIMITED TO THE THREE-YEAR DURATION OF THIS WARRANTY.

This Warranty does not affect your statutory rights.



**Warmup plc**

[www.warmup.co.uk](http://www.warmup.co.uk)

[uk@warmup.com](mailto:uk@warmup.com)

**Tel:** 0345 345 2288

**Fax:** 0345 345 2299