

Warmup konekt Wireless Smart Hub

KW-UKHUB



konekt
WIRELESS
BY **Warmup**

**Installation and
operating manual**

Package Contents

Quantity	Description
1	Warmup konekt Wireless Smart Hub
1	Plug-in mains adapter
1	Network cable
2	Screws
2	Wall Plugs
1	Quick Start Guide

Table of Contents

1	Information about this manual.....	3
2	Hazard information	3
3	konekt Wireless - Smart Hub.....	4
4	Start-up	5
	4.1 konekt App download and Connection	5
	4.2 Pairing devices & adding rooms	6
5	Troubleshooting.....	6
	5.1 Command not confirmed	6
	5.2 Duty cycle.....	6
	5.3 Error codes and LED sequence.....	7
6	Restore factory settings	7
	6.1 Resetting the Smart Hub.....	7
	6.2 Resetting and deleting the entire installation	7
7	Maintenance and cleaning	7
8	General information about radio operation	8
9	Technical specifications	8
10	Warranty.....	9

1 Information about this manual

This manual should be read carefully before commencing operation of your konekt wireless product. Always retain the product manuals for future use.

Symbols used:



Hazard indication



Important information

2 Hazard information



Do not open the device except as instructed to by the installation and operation manual. It does not contain any user serviceable components.



Do not use a malfunctioning device with visible damage. If you have any doubts, please have the device checked by a competent professional.



The device is suitable for indoor use only. It must not be exposed to moisture, vibrations, mechanical loads or temperatures outside of its rated values.



For safety and licensing reasons (CE/UKCA), unauthorised change and/or modification of the device is not permitted.



The device and its packaging are not toys; do not allow children to play with them. Small components such as batteries and packaging present a risk of choking or suffocation.



Using the device, in any way or for any purpose, other than those described in their installation and operation manuals invalidates any warranty or liability.



Use only the 5V DC, 550mA power supply provided with the device. Connect to an accessible power outlet, such that it can be disconnected without risk in the event of a fault.



Ensure cables are suitably positioned and affixed to prevent risk of tripping or strangulation.



This device is intended for use in residential, business and commercial properties only.



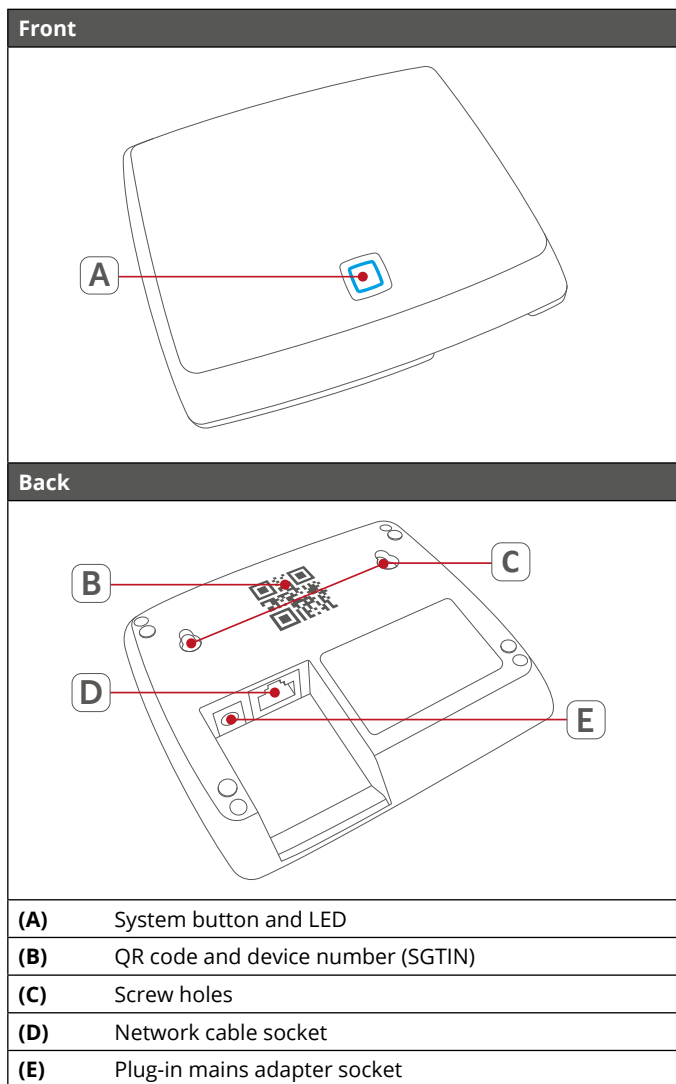
Connect the Smart Hub with the router using the supplied network cable.

3 konekt Wireless - Smart Hub

With Warmup konekt Wireless, you can install a smart home heating solution in just a few steps.

The Smart Hub is the central unit of the Warmup konekt Wireless system. It connects smartphones via the konekt App and transmits configuration data and control commands from the App to all Warmup konekt Wireless devices.

The full functionality of the Smart Hub when used with other konekt Wireless devices is detailed in the User Guide. The User Guide and Online manuals are available on our website www.warmup.co.uk



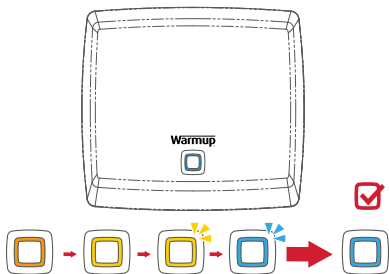
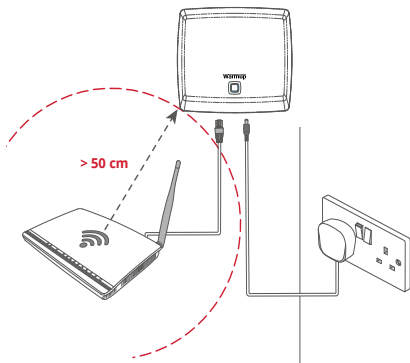
4 Start-up

4.1 App download and Connection

Step 1 - Download the konekt App



Step 2 - Connect Smart Hub



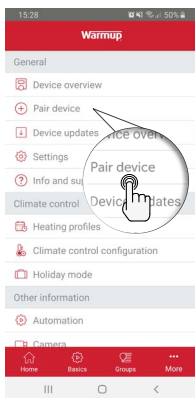
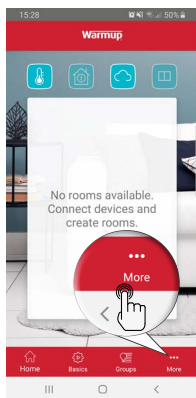
If the LED lights up differently, please follow the instructions in the app or see "5.3 Error codes and flashing sequence".

Step 3 - Scan QR Code or Enter Device Number



The Smart Hub is now set up and ready for use. Use the konekt App to begin pairing any additional konekt Wireless devices.

4.2 Pairing devices & adding rooms



Ensure you have powered on the device you wish to add to your konekt Wireless system before pairing. Enter the last four digits of the device number (SGTIN) in the App or scan the QR code. Give the new device a name and either allocate it to an existing room or create a new room. Once the device connects it can now be controlled and configured through the konekt App.

5 Troubleshooting

5.1 Command not confirmed

If at least one device does not confirm a command, this may be caused by radio interference (see "8 General information about radio operation"). The error will be displayed in the App and it may be caused by:

- Device cannot receive command signal
- Device is unable to execute the command (load failure, mechanical fault, etc.)
- Device is defective

5.2 Duty cycle

The duty cycle is a legally regulated limit of the transmission time of devices in the 868 MHz range. The aim of this regulation is to safeguard the operation of all devices working in the 868 MHz range. In the 868 MHz frequency range we use, the maximum transmission time of any device is 1% of an hour (i.e. 36 seconds in an hour). Devices must cease transmission when they reach the 1% limit until this time restriction comes to an end.

Warmup devices are designed and produced with 100% conformity to this regulation. During normal operation, the duty cycle is not usually reached. However, intensively repeated device pairing processes may mean that this limit is reached in isolated instances during commissioning.

IMPORTANT: If the duty cycle limit is exceeded, the device may stop working for a brief period. The device will start working normally again after a short period (max. 1 hour).

5.3 Error codes and LED sequence

Flashing code	Meaning	Solution
Permanent orange	Smart Hub is starting	No Action required
Fast flashing blue	Connection to the server is being established	Wait until the connection is established and the LED lights permanently blue.
Permanent blue	Normal operation, connection to server is established	You can continue operation.
Fast flashing yellow	No connection to network or router	Connect the Smart Hub to the network/router.
Permanent yellow	No Internet connection	Please check the Internet connection and firewall settings.
Long and short orange flashing	Update in progress	Please wait until the update has been completed
Fast flashing red	Error during update	Please check the server and Internet connection. Re-start the Smart Hub
Fast flashing orange	Stage before restoring the factory settings	Press and hold down the system button again for 4 seconds, until the LED lights up green.
1x long green light	Reset confirmed	You can continue operation.
1x long red light	Reset failed	Please try again.

6 Restore factory settings

6.1 Resetting the Smart Hub

Here, only the factory settings of the Smart Hub will be restored. The entire installation will not be deleted. To reset the Smart Hub:

- Disconnect the Smart Hub from the power supply.
- Plug the Smart Hub back in again while pressing and holding the system button for 4 seconds. The LED will start fast flashing orange.
- Release the system button.
- Press and hold down the system button again for another 4 seconds, until the LED lights up green. If the LED lights up red, please try again.
- Release the system button to finish.

6.2 Resetting and deleting the entire installation

Here, the entire installation is reset. Once the factory reset is done, the App must be un-installed and re-installed. The factory settings of each of the konekt Wireless devices must also be restored to enable them to be connected again.

To delete the entire installation the factory reset described above must be completed again within 5 minutes of the initial factory reset of the Smart Hub. Wait for the LED to turn blue before performing the 2nd factory reset.

7 Maintenance and cleaning



The device does not require product specific maintenance. To clean, use a soft, clean and lint-free cloth. To remove more stubborn marks, dampen the cloth with warm water. Do not use detergents or chemicals on the device.

8 General information about radio operation

Radio transmission is performed on a non-exclusive RF channel, which means that there is a possibility of interference occurring. Interference can also be caused by switching operations, electrical motors or defective electrical devices.

The range of transmission within buildings can differ greatly from that available in the open air. Besides the transmitting power and the reception characteristics of the receiver, environmental factors such as humidity in the vicinity have an important role to play, as do on-site structural/screening conditions.

Declaration of Conformity



Warmup hereby declares that the Warmup konekt Wireless radio equipment is compliant with RED Directive 2014/53/EU and Radio Equipment Regulations 2017. Please scan the QR Code for the Declaration of Conformity.

Instructions for Disposal



Do not dispose of the device(s) with regular domestic waste! Electronic equipment must be disposed of at local collection points for waste electronic equipment in compliance with the Waste Electrical and Electronic Equipment Directive.

9 Technical Specifications

Warmup konekt Wireless Smart Hub



Product Code	KW-UKHUB
Operating Voltage	100 - 240 V AC / 50 Hz
Supply Voltage	5 VDC
Current Consumption	500 mA max.
Power Consumption, Plug-in Mains Adapter	2.5 W max.
Standby Power Consumption	1.1 W
IP Rating	IP20
Ambient Temperature	5 to 35 °C
Dimensions (W x H x D)	118 x 104 x 26 mm
Weight	153 g
Radio Frequency Band	868.0-868.6 MHz, 869.4-869.65 MHz
Maximum Radiated Power	10 dBm max.
Receiver Category	SRD category 2
Type Open Area RF Range	400 m
Duty Cycle	< 1 % per h / < 10 % per h
Network	10/100 MBit/s, Auto-MDIX

10 Warranty

Warmup plc warrants these product(s), to be free from defects in the workmanship or materials, under normal use and service, for a period of three (3) years from the date of purchase by the consumer. If at any time during the warranty period the product is determined to be defective, Warmup shall repair or replace it, at Warmup's option.

If the product is defective, please either;

Return it, with a bill of sale or other dated proof of purchase, to the place from which you purchased it, or

Contact Warmup. Warmup will determine whether the product should be returned or replaced.

This warranty does not cover removal or re-installation costs and shall not apply if it is shown by Warmup that the defect or malfunction was caused by failure to follow the instruction manuals, incorrect installation or damage which occurred while the product was in the possession of a consumer. Warmup's sole responsibility shall be to repair or replace the product within the terms stated above.

WARMUP SHALL NOT BE LIABLE FOR ANY LOSS OR DAMAGE OF ANY KIND, INCLUDING ANY INCIDENTAL OR CONSEQUENTIAL DAMAGES RESULTING, DIRECTLY OR INDIRECTLY, FROM ANY BREACH OF ANY WARRANTY, EXPRESS OR IMPLIED, OR ANY OTHER FAILURE OF THIS PRODUCT. THIS WARRANTY IS THE ONLY EXPRESS WARRANTY WARMUP MAKES ON THIS PRODUCT. THE DURATION OF ANY IMPLIED WARRANTIES, INCLUDING THE WARRANTIES OF MERCHANTABILITY AND FITNESS FOR A PARTICULAR PURPOSE, IS HEREBY LIMITED TO THE THREE-YEAR DURATION OF THIS WARRANTY.

This Warranty does not affect your statutory rights.



Warmup plc

www.warmup.co.uk

uk@warmup.com

Tel: 0345 345 2288

Fax: 0345 345 2299